

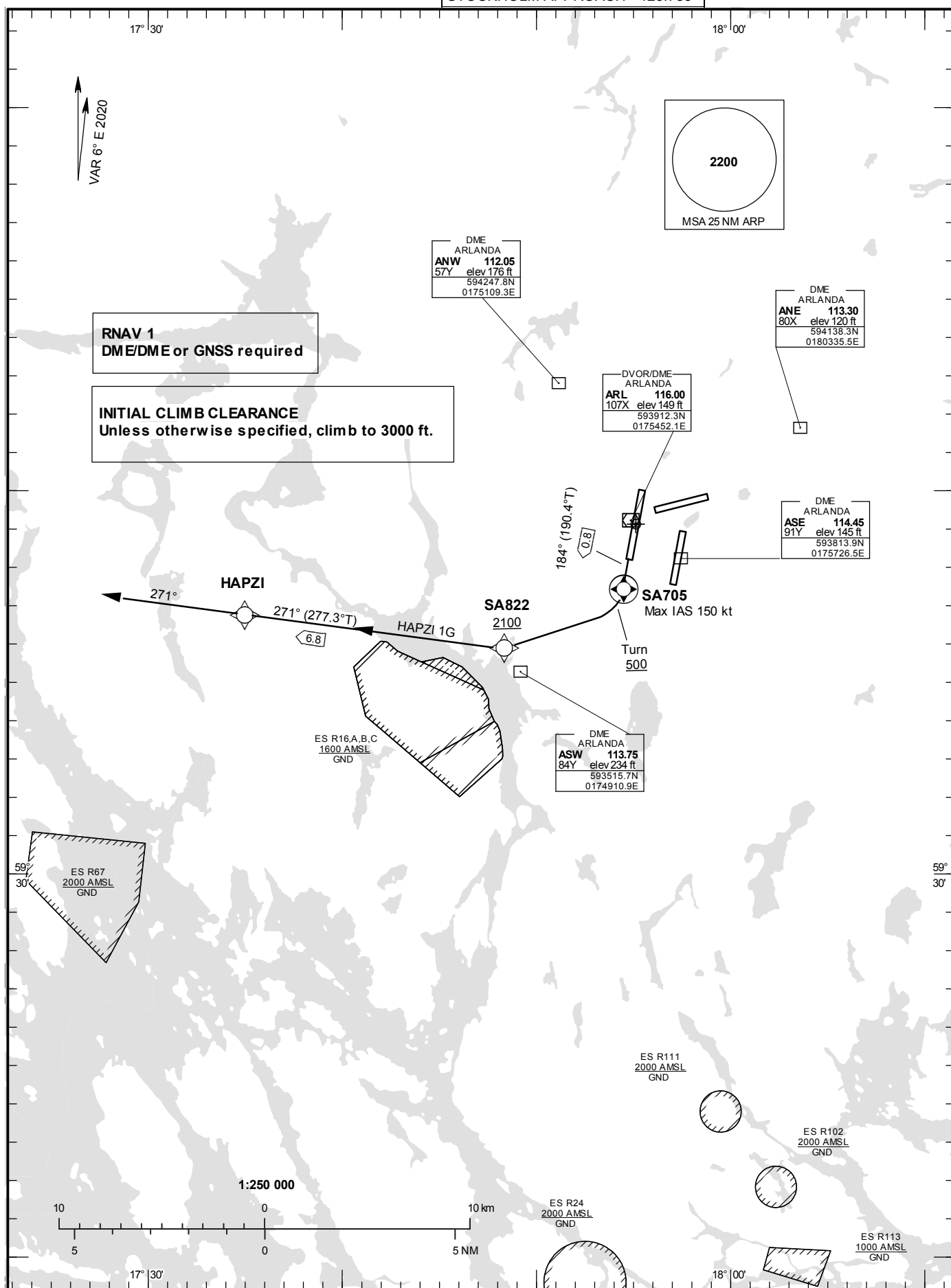
STOCKHOLM/Arlanda
PROP RNAV RWY 19R

HAPZI 1G

**STANDARD INSTRUMENT
DEPARTURE CHART (SID) –
ICAO**

HGT and ALT in ft
BRG are MAG (True)
TA 5000 ft AMSL

ARLANDA TOWER	118.505
ARLANDA ATIS DEP	121.630
STOCKHOLM APPROACH	123.755



CHANGE: Editorial

STOCKHOLM/Arlanda

Prescribed Coding of RNAV 1 SID PROP for RWY 19R

Notes:

INITIAL CLIMB CLEARANCE: Climb to 3000 ft unless otherwise specified.

Aircraft proceeding on RNAV SID shall use 500 ft/NM (8.2%) as a minimum gradient of climb up to 2100 ft AMSL.
Aircraft unable to conform with this procedure shall inform ATC accordingly.

ACFT unable to follow RNAV SID: Report “unable RNAV SID due RNAV type” to Clearance Delivery and “unable RNAV SID” to STOCKHOLM DEPARTURE at first contact.

Aircraft from STOCKHOLM/Arlanda shall not be operated at an airspeed of more than 250 kt IAS below FL 100 unless otherwise instructed.

Contact Frequency: Contact STOCKHOLM DEPARTURE, when so instructed by TWR, on channel indicated below.

RNAV SID HAPZI 1G (HAPZI ONE GOLF DEPARTURE)

Path Term	Waypoint Identifier	Fly-over	Course °M(°T)	Dist (NM)	Turn Dir	Rest Alts (ft AMSL)	Speed Limits (kt)	VPA/ RDH (°/ft)	Rec Navaid	Navigation Specification
CF	SA705	Y	184°(190.4°)	0.8	-	-	-150	-	ARL	RNAV 1
CA	-	-	184°(190.4°)	-	-	+500	-	-	-	RNAV 1
DF	SA822	-	-	-	R	+2100	-	-	-	RNAV 1
TF	HAPZI	-	271° (277.3°)	6.8	-	-	-	-	-	RNAV 1
VM	-	-	271°	-	-	-	-	-	-	RNAV 1

SID instruction:

Climb to SA705 on course 184° (max IAS 150 kt). At or above 500ft turn right to SA822 (MNM 2100 ft) – HAPZI - Continue on heading 271°. (MNM climb gradient 8.2% (500 ft/NM) until SA822/ARL DME 4.7)

124.105 MHz or
123.755 MHz

ACFT unable to follow RNAV SID:

Report "unable RNAV SID due RNAV type" to Clearance Delivery and "unable RNAV SID" to Stockholm Departure at first contact.
Climb on track 184° to ARL DME 2. Turn right to track 240° (max IAS 150 kt in turn). At ARL DME 4.5 turn right to track 270°. Expect radar vectors to HAPZI. (MNM climb gradient 8.2% (500 ft/NM) until ARL DME 4.7)